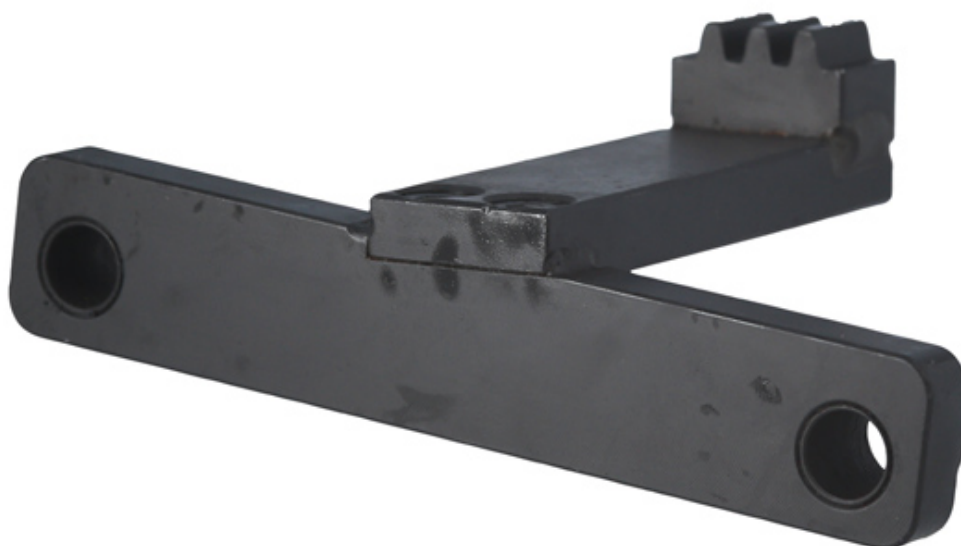


Flywheel Locking Tool - for Mercedes-Benz

Designed to fit in place of the starter motor to lock the crankshaft via the flywheel ring gear on the range of Mercedes-Benz engines listed.



Additional Information

- Flywheel holding and locking tool, install in place of starter motor.
- Applications include: Mercedes-Benz A class (2013 - 2019), B class (2012 - 2019), CLA (2013 - 2019) and GLA (2014 - 2020).
- Engine applications include: 1.5D (607.xxx), 1.6P (270.xxx), 2.0P (133.xxx and 270.xxx).
- Equivalent to OEM 270 589 00 40 00.
- Use in accordance with OEM instructions.

<http://lasertools.co.uk/product/8071>



